

PMD671 Firmware Update Procedure

WARNING: These steps must be followed precisely and in their exact order. Failure to execute any step in the exact fashion that is described will result in the failure of the machine. Any machine that fails because the unit was updated incorrectly will require service at the customer's expense. If you do not feel comfortable performing this update yourself, please call D&M Professional at 630-741-0330 option 1 to set up a return authorization so the machine can be updated in house.

What you will need

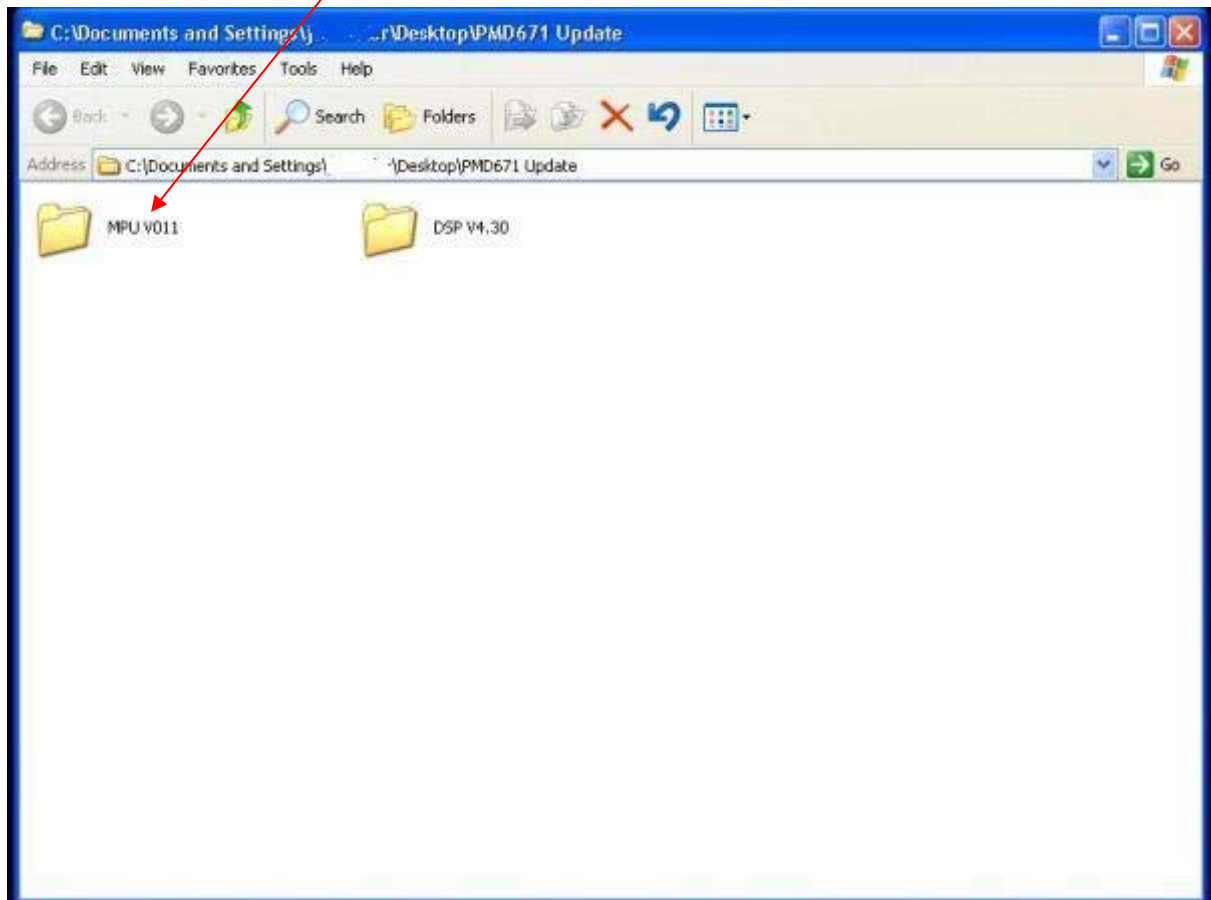
1. The PMD671
2. A DA670PMD or DA600PMD power supply
3. A blank compact flash card less than 2 GB in size
4. A paper clip
5. A PC



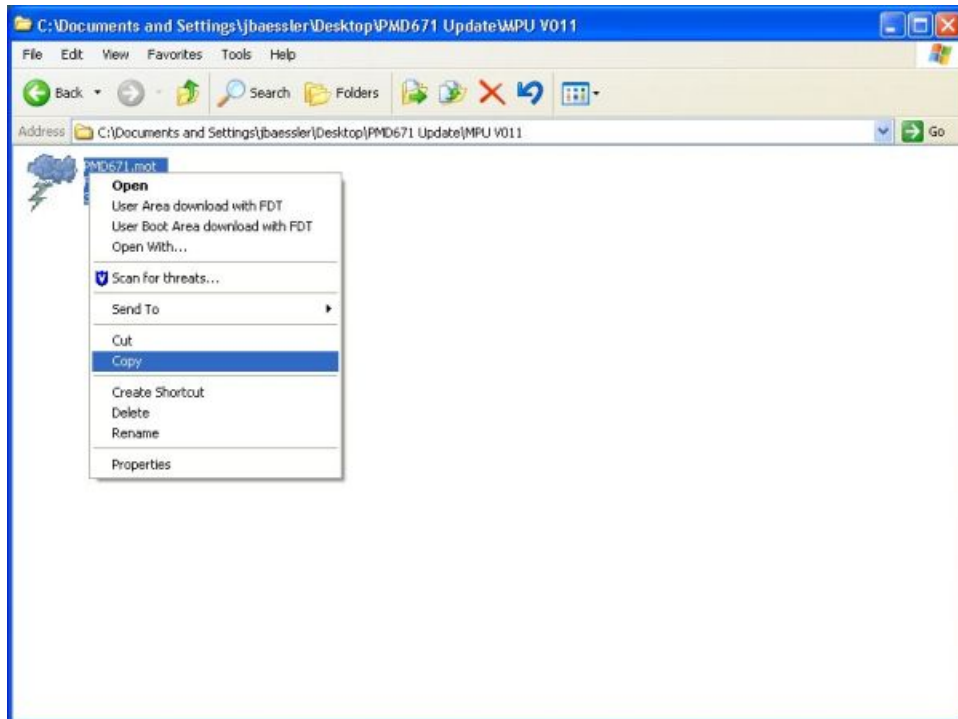
Procedure for MPU update

1. Transfer the update file from your PC to the compact flash card. First connect the flash card to a computer using either a card reader or the PMD671 in USB mode.

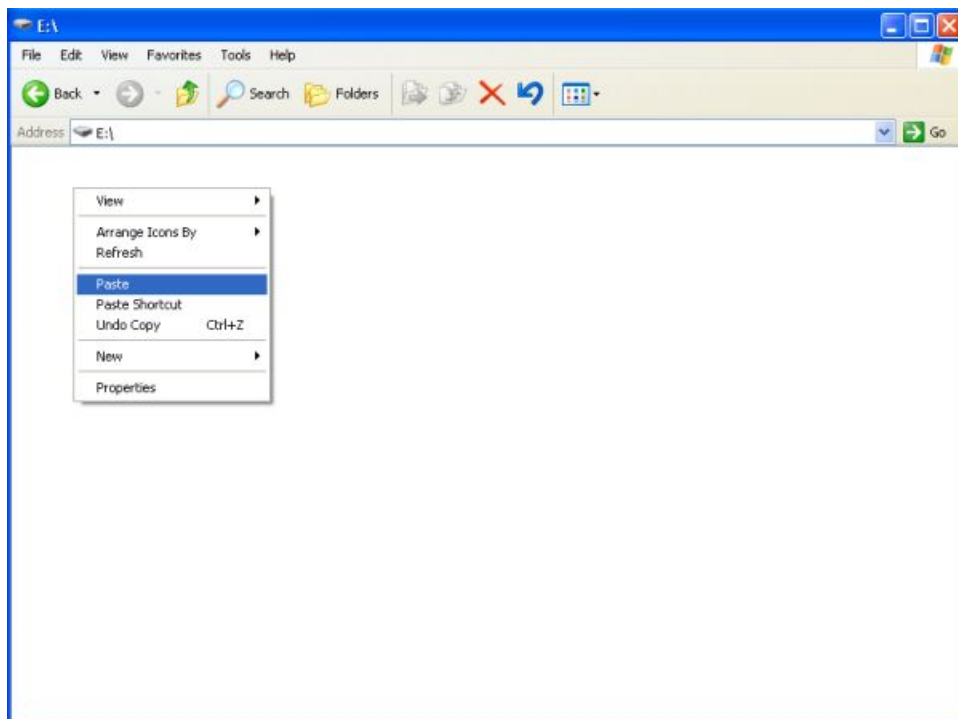
Inside the extracted folder for the update you will find two other folders. Double click the one named MPU V011.



Now right click on the file named “PMD671.mot” and choose “copy”

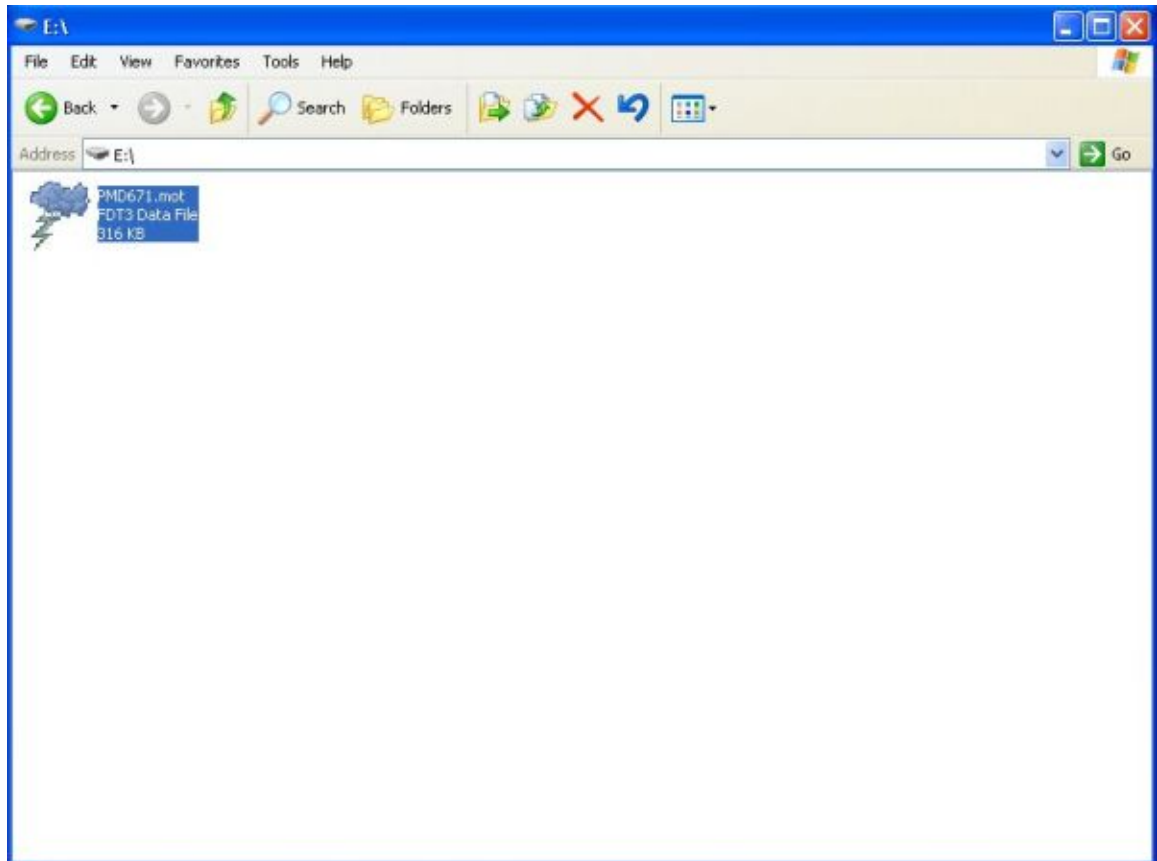


Next double click on your compact flash drive. Right click and choose “paste”



Now the file will copy over to the compact flash card.

Be sure that the file is in the root directory of the flash card.



Safely eject your hardware and remove the flashcard from either the card reader or the PMD671.

2. Prepare the PMD671 for the update

Be sure that there are no batteries in the unit. **Leaving batteries in the unit during the update could damage the machine.**



Also be sure that the power supply is not connected at this time.

Bend the paper clip as shown



Locate the small hole on the back of the PMD671



Inside this hole there is a small push switch. This is the switch which puts the machine into the update mode.

Using the bent paper clip, stick the long end into the small hole and push the switch to the in position.



BE SURE THAT NO POWER IS APPLIED TO THE UNIT WHEN YOU PUSH THE SWITCH

3. Perform the MPU update

With power still removed from the machine, insert the compact flash card with the “PMD671.mot” file on the root.



Be sure that power is not applied to the unit when you insert the card.

When the card is inserted fully and the door is closed, then plug the power cable into the side of the machine. The record light should light up in red.



After the record light lights up for a second, it will begin to flash very quickly. This indicates that the new firmware is being written to the MPU and this process may take a few minutes to complete. **Do NOT remove power while it's flashing.** When it is completed, the light will either light solid red or turn off completely. When it is completed removed the power from the unit, removed the card and **reinsert the paper clip to switch the push switch to the out position** which means that the machine will no longer be in update mode.

Procedure for DSP update

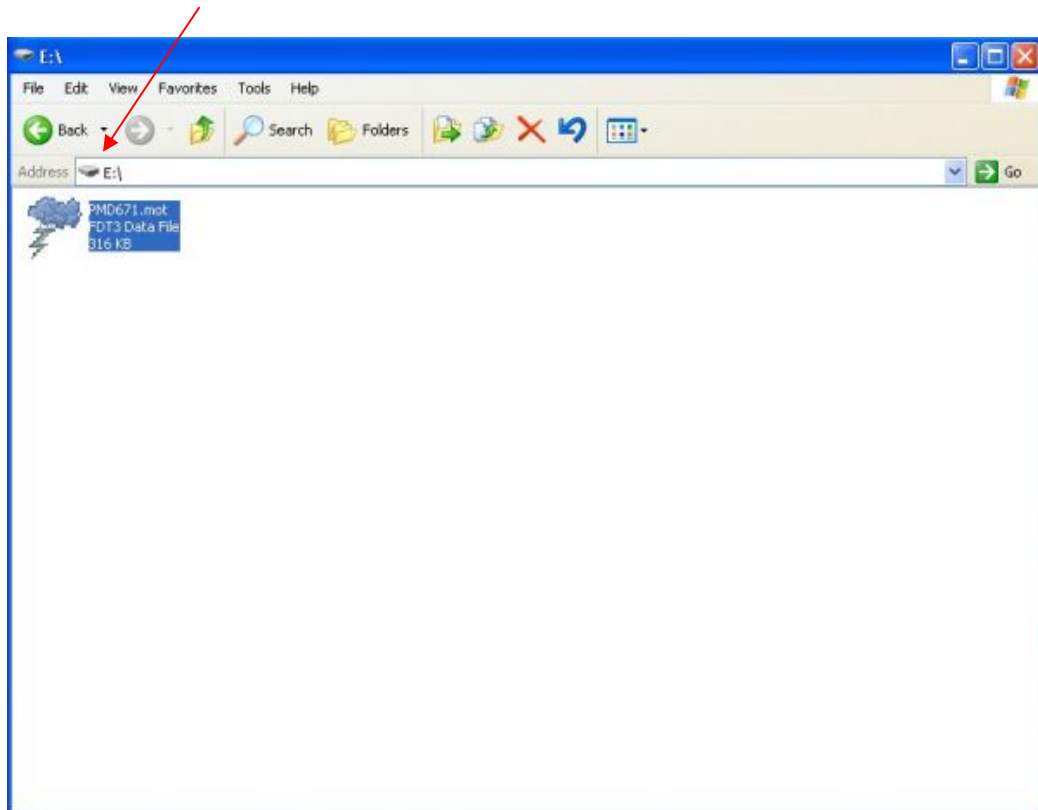
Be sure at this point that you took the machine out of update mode by pushing the small push switch in the back to the out position with the paper clip. To double check that this is done, plug in the machine while there is no card in it and watch the display closely as you plug it in. If the machine is no longer in the update mode, you will see the word “loading” appear for a brief second right when you plug the power connection in.

If you fail to take the machine out of the update mode before connecting the card to it with the DSP firmware on it, the ROM in the unit will bomb and require service.

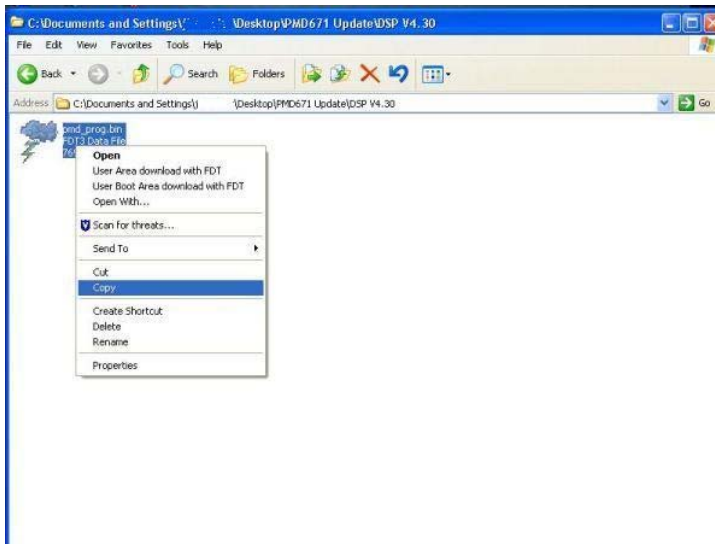
1. Prepare the compact flash card for the DSP update

Place the card in either a card reader or the PMD671 and put the machine into USB mode while connected to a computer.

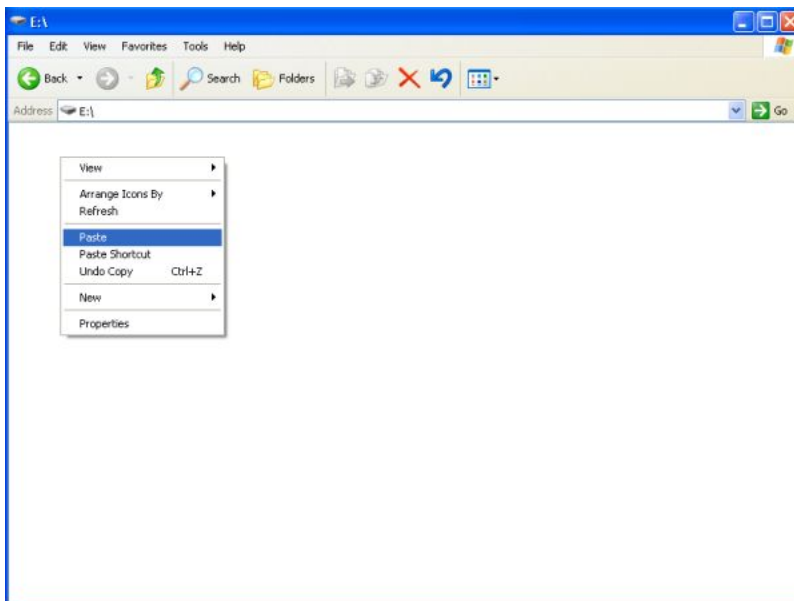
Double click on the compact flash drive and delete the PMD671.mot file that is currently on the card.



Once the file is deleted, go back in to the extracted “PMD671 Update” folder and double click on the “DSP V4.30” folder. In here you will find a file called pmd_prog.bin. Right click on this file and choose copy.



Now open the compact flash card (should be blank, if it's not go back to the beginning of this step) and select paste.



The file, pmd_prog.bin, will now copy over to the flash drive.

2. Prepare the PMD671 for the DSP update

Insert the card with the pmd_prog.bin file on the root into the PMD671 while the unit is unplugged.



Be sure that the button in the back is in the out position. If this wasn't done after the MPU update, the unit will fail during this update and would need service.

Plug the power in and make sure that "loading" appears on the screen for a brief second and not the record light.

3. Update the DSP firmware.

With the power plugged in, switch the power switch to power the unit on. The machine will first appear to power up normally. After a few seconds the screen will display “DSP UpDate”. **Do not remove power while this is displayed.**



When the update is finished the machine will power up normally. Format the card inside the machine in the edit menu otherwise it will update the DSP every time that card is used in the machine.

Confirmation of the firmware versions

To confirm that the unit has been updated, simply press and hold the A-B Repeat and Mark buttons while powering the unit on. When “Version” is displayed press the play button. The current versions are MPU 0011 and DSP 4.30. When this is confirmed just press the stop button.

If you have any questions or issues regarding this update please contact D&M Professional Technical Support at 630-741-0330 option 1 or by email at techsupport@d-mpro.com.

